



Cary Photographic Artists

How to find the F-stop, shutter speed, ISO (and more!) of your photograph

Harry O'Connor

© Harry O'Connor 2009

Produced for club meeting on December 17, 2009

What is EXIF?

Exchangeable image file format

created by the Japan Electronic Industries Development Association

latest version 2.2 dated April 2002

not currently a standard

use by camera manufacturers is nearly universal

It is a specification for the image file format with the addition of specific metadata tags such as:

Date and time information

Camera settings

A thumbnail for previewing

Descriptions and copyright information

EXIF is a mash-up of TIFF and JPEG; most manufacturers include the tags into their raw.

Tags I find most useful/interesting

Camera Make/Model

Original Date & Time

Exposure Time

F-Stop

ISO

Focal Length

Focal Length 35mm (some cameras)

Recommendation:
go to your original

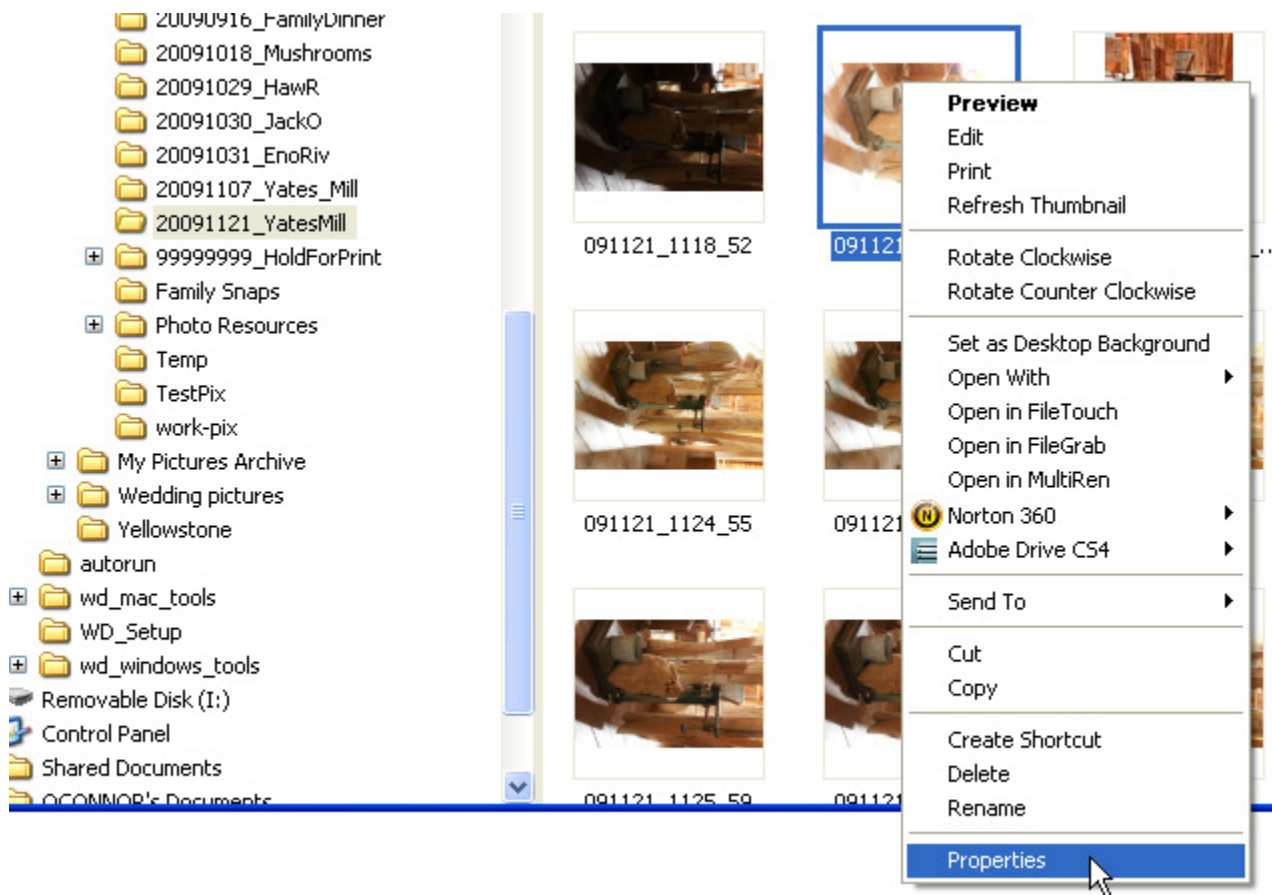
EXIF data fields do not always go with the
image...

File → Save as...

Sometimes missing or no fields

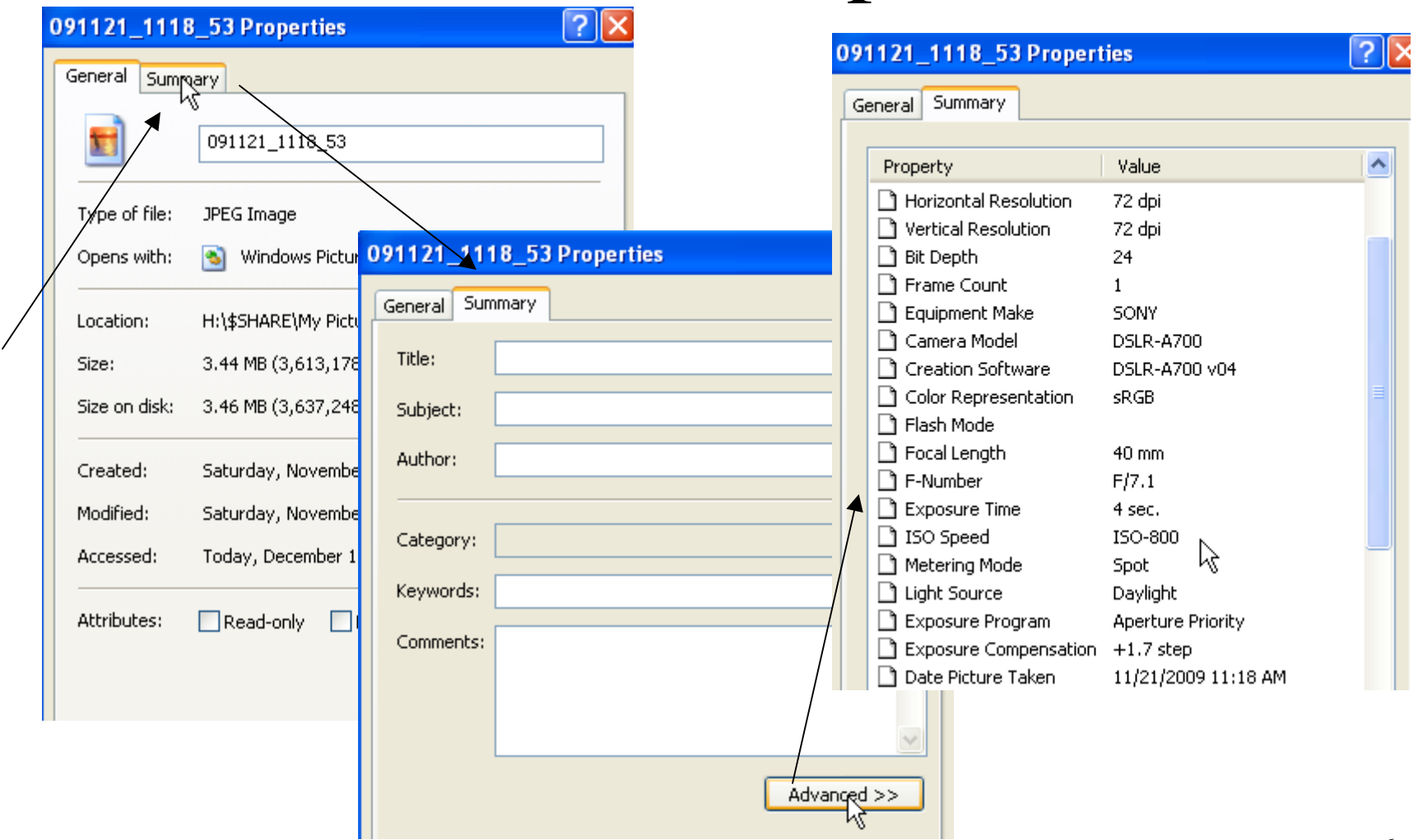
Note: my research only includes
jpeg and raw formats. I cannot
answer whether these techniques
work on TIFF, DNG or other
formats.

Windows Explorer (JPEG only)



Right click
on image,
mouse down
and click
properties

Windows Explorer (JPEG only)

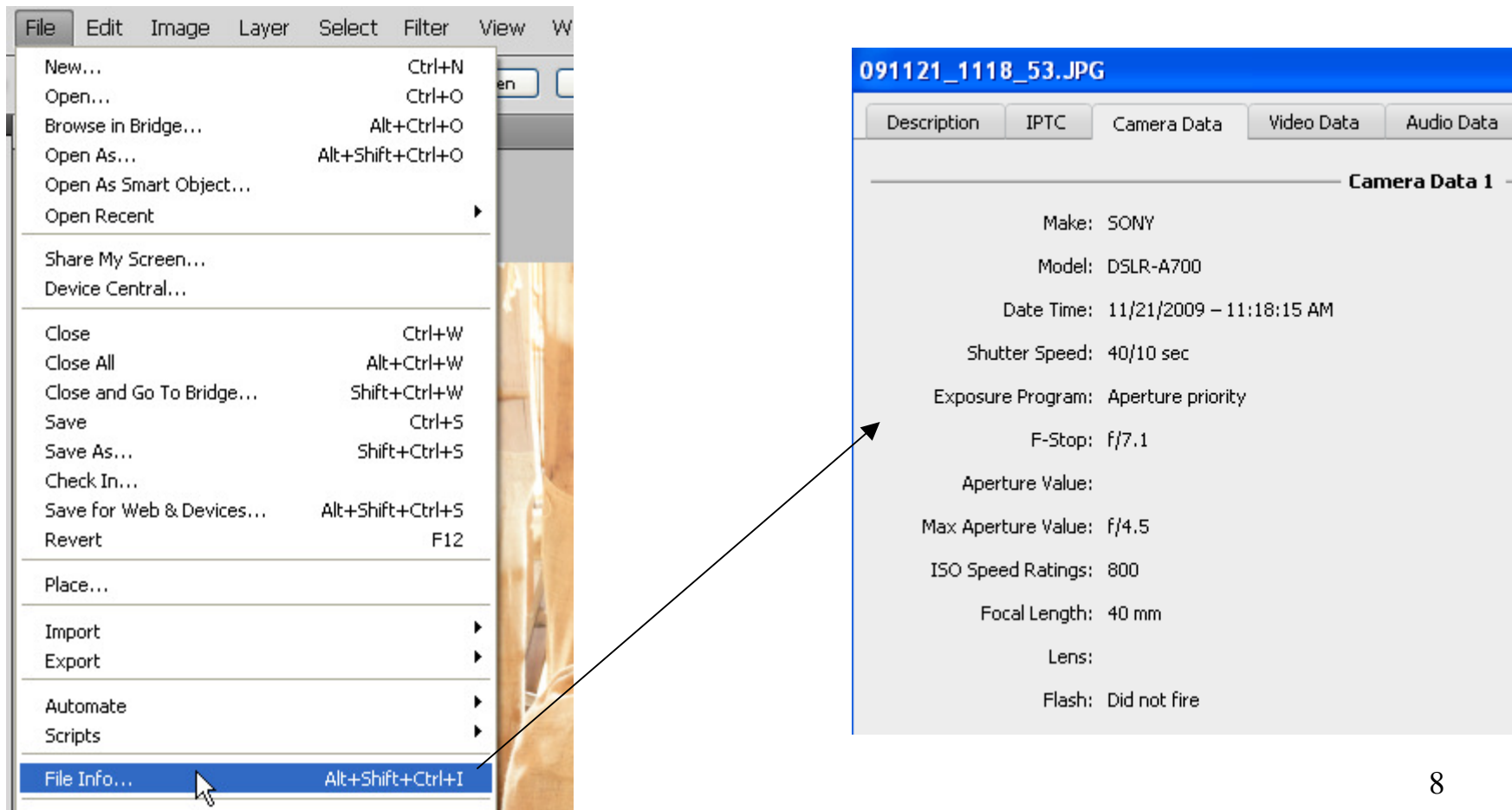


MAC (JPEG only, I think)

On Mac OS X 10.4 and above, EXIF information may be viewed in the Finder by doing Get Info on a file and expanding the More Info section.

Photoshop CS4

This should work similarly in Elements, on Windows or MAC and on any image format PS will open.



Irfanview

JPEG and “selected”
raw with optional
download

The screenshot displays the IrfanView interface with the 'Image properties' dialog box open. The 'EXIF info*' button is highlighted, and an arrow points to the 'EXIF Info' window. The 'EXIF Info' window shows a list of EXIF tags and their values for the file '091121_1118_53.JPG'.


EXIF Tag	Value
ImageDescription	SONY DSC
Make	SONY
Model	DSLR-A700
Orientation	Left bottom
XResolution	72
YResolution	72
ResolutionUnit	Inch
Software	DSLR-A700 v04
DateTime	2009:11:21 11:18:15
YCbCrPositioning	Co-Sited
ExifOffset	396
ExposureTime	4 seconds
FNumber	7.10
ExposureProgram	Aperture priority
ISOSpeedRatings	800
ExifVersion	0221
DateTimeOriginal	2009:11:21 11:18:15
DateTimeDigitized	2009:11:21 11:18:15
ComponentsConfiguration	YCbCr
CompressedBitsPerPixel	8 (bits/pixel)
BrightnessValue	-2.63
ExposureBiasValue	1.70
MaxApertureValue	F 4.50
MeteringMode	Spot
LightSource	Daylight
Flash	Flash not fired, compulsory flash mode
FocalLength	40.00 mm

<http://www.irfanview.com/>

Picassa

Picture Data: Viewing EXIF data



To view EXIF data in Picasa, right-click a photo and select **Properties**. To view advanced EXIF data, double-click the image and click the beanie icon  in the lower right corner of the 'Edit Photo' screen. This will show a real-time histogram that displays advanced EXIF information as well as RGB colour values and intensity.

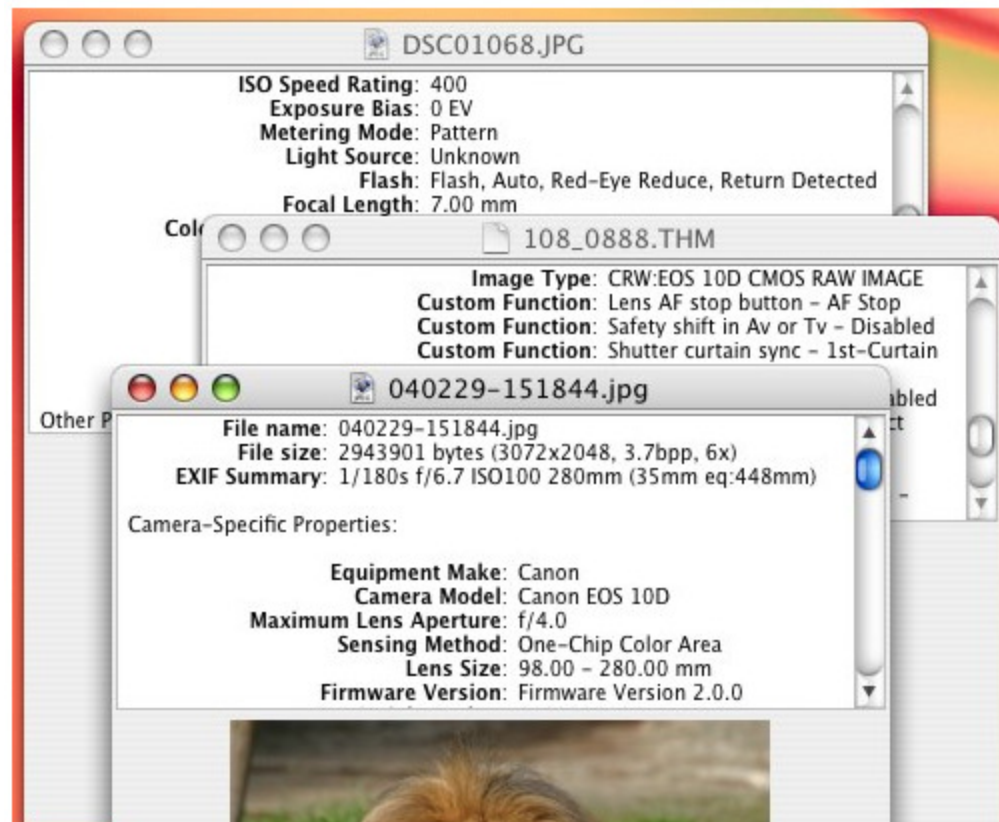
The following EXIF data is available in Picasa:

- Date and time that the photo was taken
- Camera make & model
- Resolution
- Orientation
- Focal length
- Aperture
- ISO speed
- GPS latitude and longitude

Picasa will read the EXIF data for [select RAW files](#); however it doesn't support all RAW file types.

<http://picasa.google.com/support/bin/answer.py?hl=en-uk&answer=19612>

Simple EXIF Viewer for Mac OS X



<http://homepage.mac.com/aozer/EV/>

Why do you care?

You can examine blurred / sharp backgrounds in different shots to evaluate DoF.

You can examine “shake” blur shots to determine your hand held capability.

You can evaluate the focal lengths you use when thinking about a new lens.

You can report the values at club meetings or when entering contests.